



PHOENIX INVESTORS
PROPOSED
+/- 210,000 SF
WAREHOUSE

BUILD TO SUIT
1501 INDUSTRIAL PARK DR

210,000 SF
MAYSVILLE, KY

ROBERT KRIEWALDT 920-915-9746 | ROBERT@PHOENIX3PL.COM



PHOENIX
LOGISTICS

Strategic Real Estate. Applied Technology. Tailored Service.

This document has been prepared by Phoenix Investors for advertising and general information only. Phoenix Investors makes no guarantees, representations, or warranties of any kind, expressed or implied, regarding the information including, but not limited to, warranties of content, accuracy, and reliability.

PROPERTY DETAILS

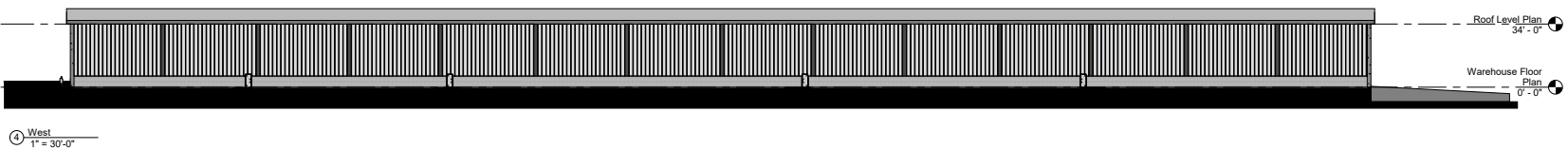
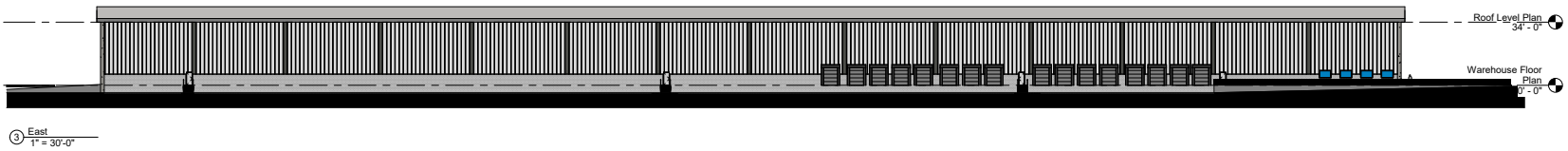
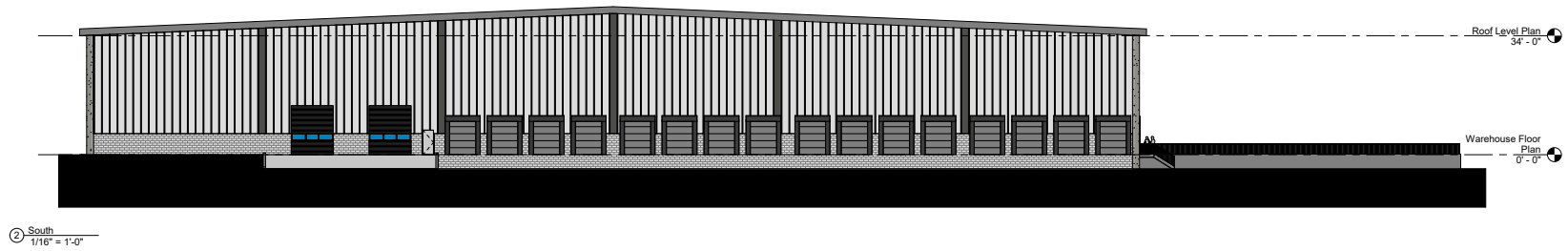
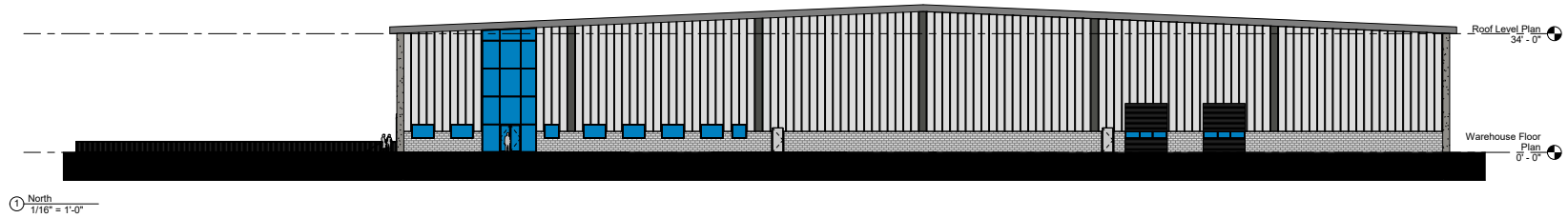
1501 INDUSTRIAL PARK DR | MAYSVILLE, KY

WAREHOUSE SPACE	210,000 SF
OFFICE SPACE	5,000 SF
DOCK DOORS	21
CLEAR HEIGHT	32'
ROOF	TPO
WALLS	Metal
FLOORS	8" Concrete
FIRE SUPPRESSION	ESFR
LIGHTING	High Efficiency LED
POWER	To Suit Based on Tenant Need
LAND AREA	28.7 Acres
ZONING	I-1A, Light Industrial



BUILDING PLAN

1501 INDUSTRIAL PARK DR | MAYSVILLE, KY



LABOR FORCE OVERVIEW

Maysville-Mason County, Kentucky is a great location for manufacturing and transportation-related industries to attract skilled workers. For more than five years, Maysville- Mason County has experienced exponential growth in the automotive, fabricated metals, paper and wood manufacturing, as well as inland waterway logistics. This area has an available labor advantage, giving employers the ability to pay 34% less than the national average for an experienced employee. Current employers are highly satisfied with the workforce and rate them as skilled, ethical, low-turnover, and of a higher quality than what they must pay to attract them.

Demographics

Population: 17,122

Number of Businesses: 568

Employed Population: 7,646

Median Household Income:
\$44,313

Median Property Value:
\$144,200

Median Age: 41

Source: datausa.io

WAGES & COSTS LOWER/SKILLED LABOR HIGHER THAN THE NATIONAL AVERAGE

34%

LOWER WAGES THAN U.S. AVERAGE

The Mason County Labor shed saves employers 34% against the national average.

43x

MORE AUTOMOTIVE MANUFACTURING WORKERS

Mason County's high-wage labor shed has 43 times more automotive manufacturing workers than the national average with nearly 8,000 people employed.

12%

LOWER THEN THE U.S. AVERAGE

Cost of living and doing business in Mason County Kentucky is 12% less than the national average.

2x

MORE OVERALL MANUFACTURING WORKERS

Mason County's high-wage labor shed has 2 times more manufacturing workers than the national average with nearly 30,000 people employed in production facilities.

Maysville-Mason County provides a true advantage to employers. Lower costs of doing business and lower average wages combined with higher concentrations of key manufacturing labor make Maysville-Mason County a top location for a wide variety of manufacturing industries.

Source: *Maysville-Mason County Industrial Development Authority*

LOCATION MAP

1501 INDUSTRIAL PARK DR | MAYSVILLE, KY

FLEMING-MASON AIRPORT	10 MILES
CINCINNATI	58 MILES
DAYTON	100 MILES
LOUISVILLE	134 MILES
INDIANAPOLIS	170 MILES

