



**FOR SALE OR LEASE** | **384,701 SF**  
**1885 ALAMAC ROAD** | **LUMBERTON, NC**

**ROBERT KRIEVALDT** 920-915-9746 | [ROBERT@PHOENIX3PL.COM](mailto:ROBERT@PHOENIX3PL.COM)



**PHOENIX**  
**LOGISTICS**  
*Strategic Real Estate. Applied Technology. Tailored Service.*

This document has been prepared by Phoenix Investors for advertising and general information only. Phoenix Investors makes no guarantees, representations, or warranties of any kind, expressed or implied, regarding the information including, but not limited to, warranties of content, accuracy, and reliability.



# PROPERTY HIGHLIGHTS

 **CLOSE PROXIMITY  
TO I-74 & 1-95**

 **GATE GUARD AND  
PERIMETER SECURITY  
FENCING TO TRUCK  
COURTS**

 **6 MILES TO  
LUMBERTON  
REGIONAL  
AIRPORT**

 **WASTEWATER  
TREATMENT  
FACILITY ON-SITE**

 **RECENTLY  
RENOVATED  
2023**



# PROPERTY DETAILS

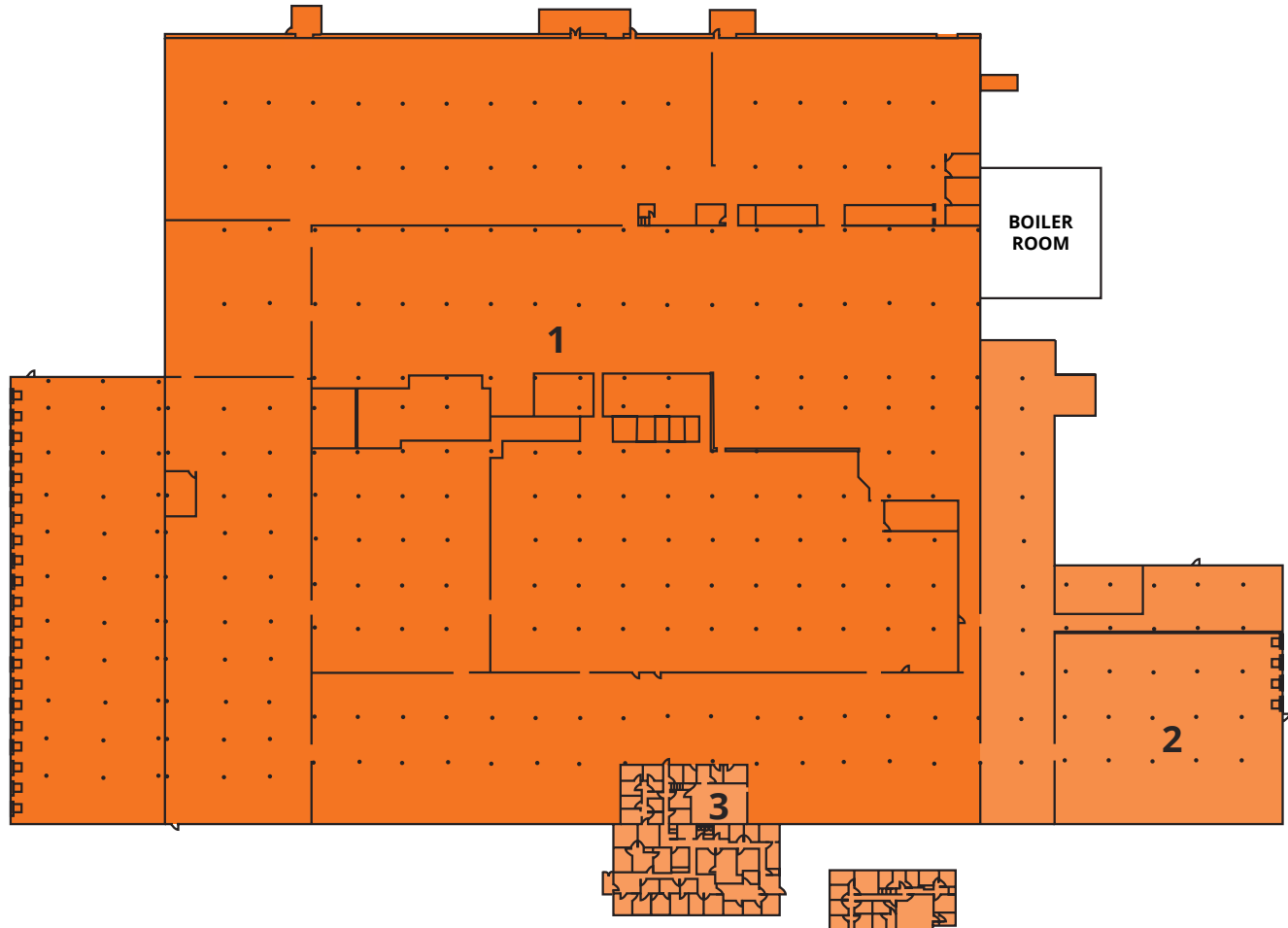
1885 ALAMAC ROAD | LUMBERTON, NC

AVAILABLE SPACE	384,701 SF
WAREHOUSE SPACE	370,674 SF
OFFICE SPACE	14,027 SF
DRIVE-INS	3
DOCK DOORS	25
CLEAR HEIGHT	22' - 31'
COLUMN WIDTH & DEPTH	30' X 50'
ROOF	Steel Deck/Rubber Membrane
WALLS	Brick over Block & Fluted Pre-stressed Concrete Panels
FLOORS	6" Reinforced Concrete
YEAR BUILT	1962
YEAR RENOVATED	2023
LIGHTING	New High-Efficiency LED Lights
FIRE SUPPRESSION	100% Wet System
PARKING	650 +/- Paved, Marked, & Lighted Spaces
LAND AREA	151.79 Acres
ZONING	I-2: Heavy Industrial
PARCEL ID	1017-02-033, 1017-02-03301
OPEX ESTIMATE	\$0.48/SF



# FLOOR PLAN

1885 ALAMAC ROAD | LUMBERTON, NC



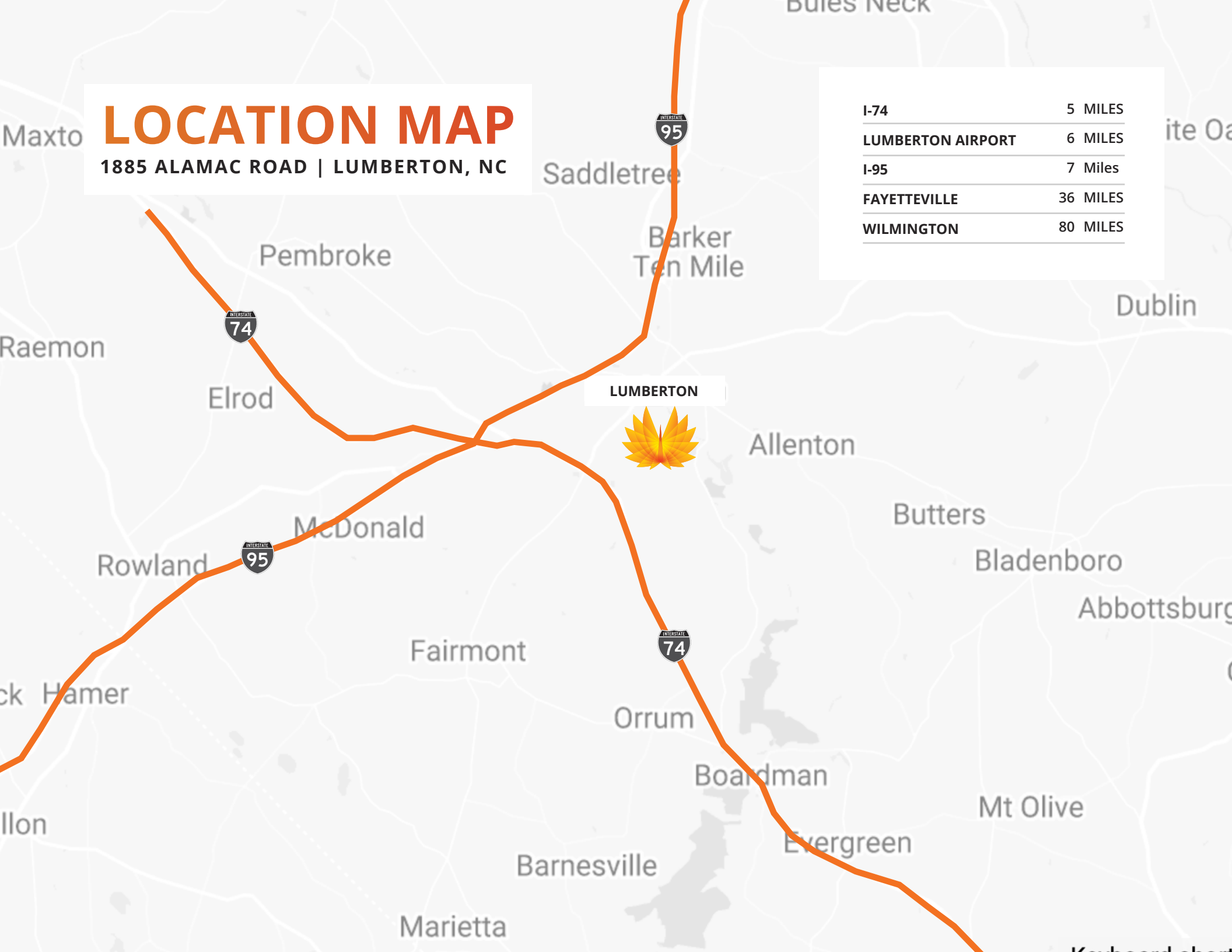
NUMBER	SPACE DESIGNATION	COLUMN SPACING	CLEAR HEIGHT	DOCKS	SQUARE FEET
1	AVAILABLE WAREHOUSE	30' x 43'	19' - 30'	21	325,708 SF
2	AVAILABLE WAREHOUSE	30 x 30'	21' - 31' 3"	4	44,966 SF
3	AVAILABLE OFFICE	N/A	DROP CEILING	N/A	14, 027 SF
<b>TOTAL</b>					<b>384,701 SF</b>



# LOCATION MAP

1885 ALAMAC ROAD | LUMBERTON, NC

I-74	5 MILES
LUMBERTON AIRPORT	6 MILES
I-95	7 Miles
FAYETTEVILLE	36 MILES
WILMINGTON	80 MILES





**FOR SALE OR LEASE**  
**1885 ALAMAC ROAD**

**384,701 SF**  
**LUMBERTON, NC**

**ROBERT KRIEWALDT 920-915-9746 | ROBERT@PHOENIX3PL.COM**



**PHOENIX**  
**LOGISTICS**

*Strategic Real Estate. Applied Technology. Tailored Service.*