



**FOR LEASE OR SALE**  
**300 E 39TH STREET**

**113,105 SF**  
**HASTINGS, NE**

**ROBERT KRIEVALDT 920-915-9746 | ROBERT@PHOENIX3PL.COM**



**PHOENIX**  
**LOGISTICS**

*Strategic Real Estate. Applied Technology. Tailored Service.*

This document has been prepared by Phoenix Investors for advertising and general information only. Phoenix Investors makes no guarantees, representations, or warranties of any kind, expressed or implied, regarding the information including, but not limited to, warranties of content, accuracy, and reliability.



# PROPERTY HIGHLIGHTS



**OUTDOOR  
STORAGE POSSIBLE**



**CLOSE PROXIMITY  
TO I-80**



**WAREHOUSE  
HEATED BY TWO  
HASTINGS AIR  
ROTATION UNITS**

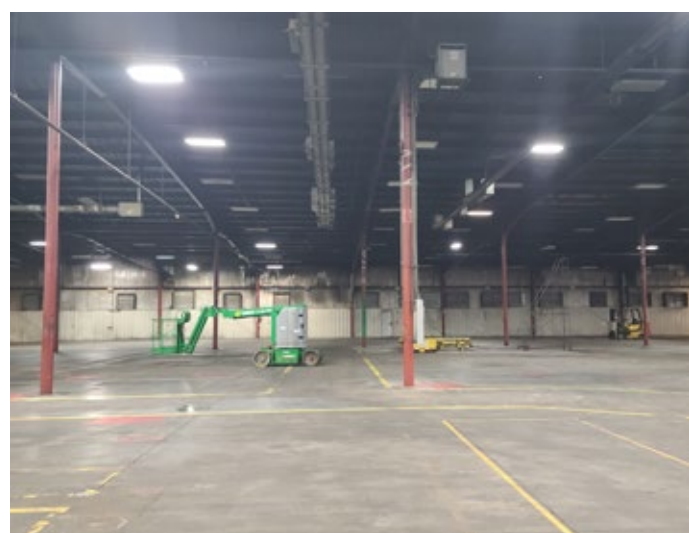
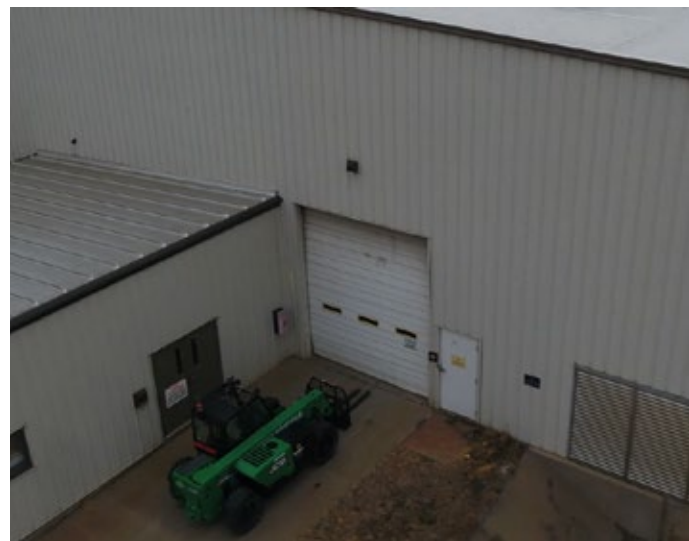


# PROPERTY DETAILS

300 E 39TH STREET | HASTINGS, NE

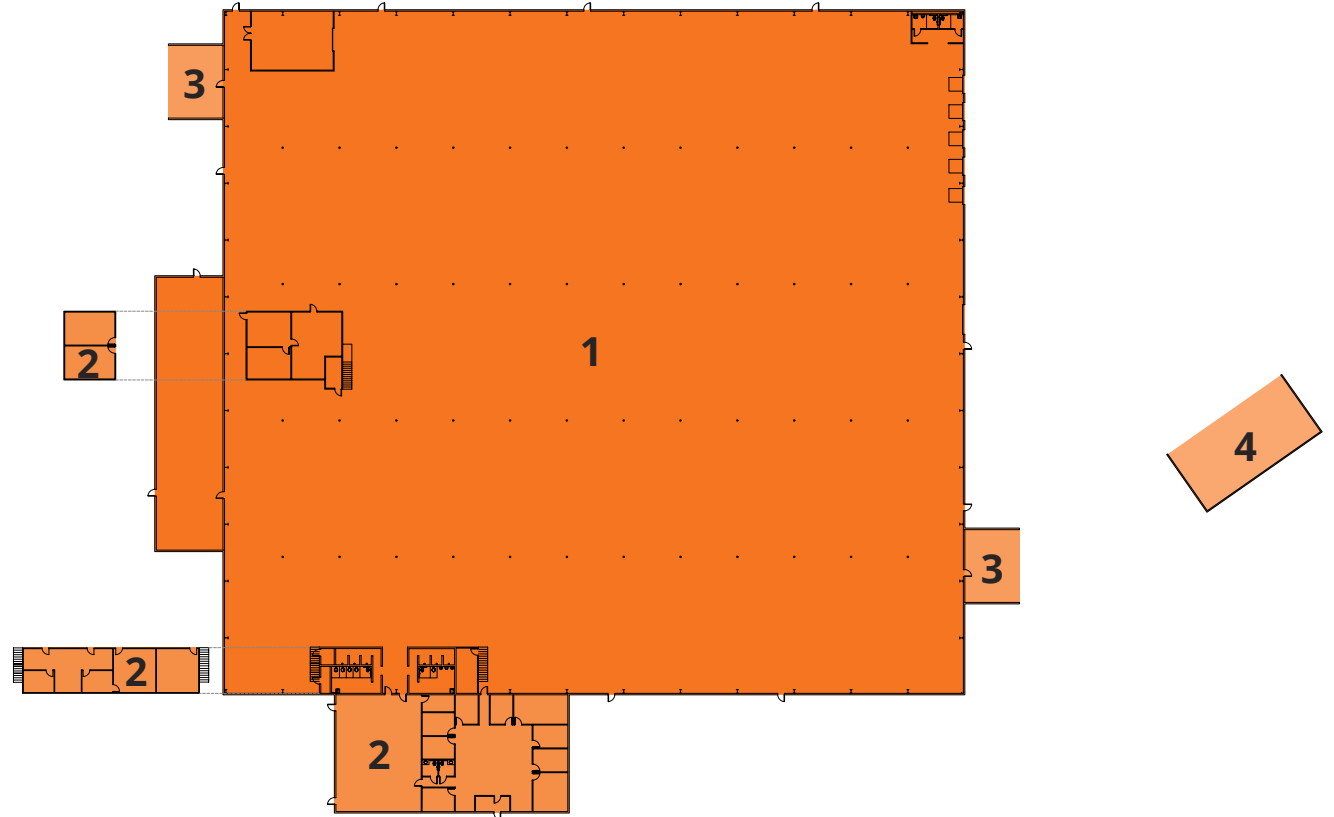
AVAILABLE SPACE	113,105 SF
WAREHOUSE SPACE	101,941 SF
OFFICE SPACE	7,656 SF
COVERED STORAGE	1,600 SF
EXTERIOR STORAGE	1,908 SF
DOCK DOORS	5
DRIVE-IN DOORS	1
CRANES	1 One-ton; 1 Two-ton
CLEAR HEIGHT	20' - 28'
COLUMN WIDTH & DEPTH	25' x 60'
ROOF	Metal
WALLS	Metal
YEAR BUILT	1996
POWER	1500 & 2500 KVA Transformers; 2,000 & 3,000 AMP 3-Phase Switch Gear Services
BUSS BARS	2,000 AMP Services: 4 Sub-Buss, 3,000 AMP Service: 1 Main Buss; 4 Sub-Buss
PARKING	150 Parking Stalls
LAND AREA	8.93 Acres
ZONING	I-2: Heavy Industrial
PARCEL ID	320-00084.00
OPEX ESTIMATE	<b>\$0.91/SF</b>





# FLOOR PLAN

300 E 39TH STREET | HASTINGS, NE



NUMBER	SPACE DESIGNATION	COLUMN SPACING	SQUARE FEET
1	WAREHOUSE	25' x 60'	101,941 SF
2	OFFICES	N/A	7,656 SF
3	COVERED STORAGE	N/A	1,600 SF
4	EXTERIOR STORAGE	N/A	1,908 SF
<b>TOTAL</b>			<b>113,105 SF</b>



# LOCATION MAP

300 E 39TH STREET | HASTINGS, NE

HASTINGS MUNICIPAL ARPT	5 MILES
I-80	23 MILES
LINCOLN AIRPORT	102 MILES
OMAHA	157 MILES
KANSAS CITY	295 MILES

