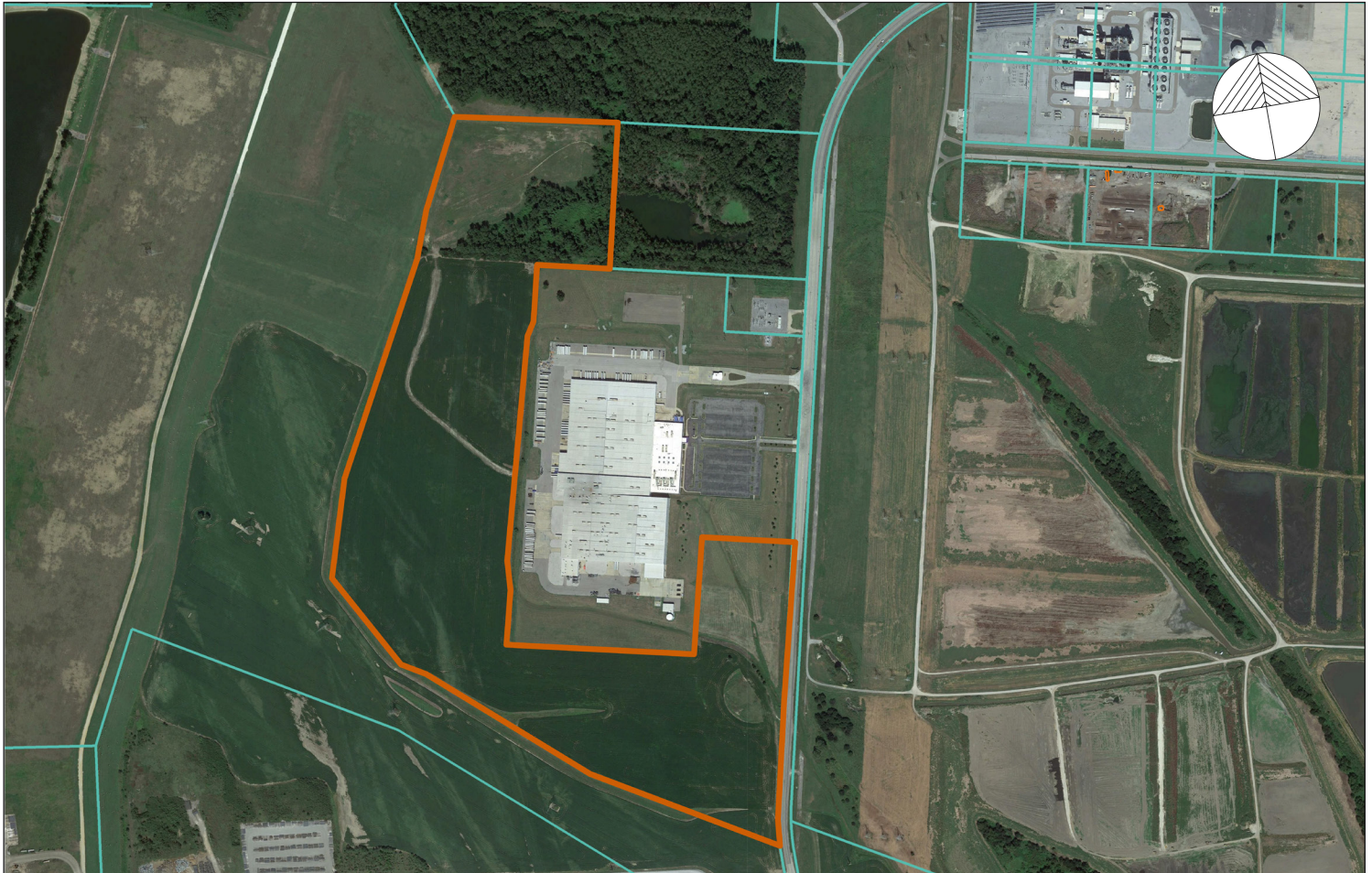


LAND FOR LEASE

135.51-ACRE INDUSTRIAL PARK



PHOENIX
LOGISTICS
Strategic Real Estate. Applied Technology. Tailored Service.



3231 PAUL R LOWRY RD | MEMPHIS, TN

SITE SPECS

- 135.51 Total acres
- Parcel ID: 050101 00067
- Zoning: IH
- Topography: Flat
- Current use: Agricultural
- Frontage: Approximately 2,233' on Paul R Lowry Rd

INFORMATION

- Adjacent to Nurcor Steel Plant
- Heavy power potential
- Adjacent to T.E. Maxson Wastewater Treatment Facility
- Across the street from TVA power station

ROBERT KRIEWALDT | 920-915-9746 | ROBERT@PHOENIX3PL.COM