



FOR LEASE

342 SHELBYVILLE MILLS RD

384,000 SF

SHELBYVILLE, TN

ROBERT KRIEWALDT 920-915-9746 | ROBERT@PHOENIX3PL.COM



PHOENIX
LOGISTICS

Strategic Real Estate. Applied Technology. Tailored Service.

This document has been prepared by Phoenix Investors for advertising and general information only. Phoenix Investors makes no guarantees, representations, or warranties of any kind, expressed or implied, regarding the information including, but not limited to, warranties of content, accuracy, and reliability.



PROPERTY HIGHLIGHTS



**PLANNED
RENOVATIONS
2026: WHITEBOX
RENOVATIONS, LED
LIGHTS, NEW ROOF,
& CONCRETE FLOORS**



**RECENTLY
RENOVATED
OFFICES**



AMPLE PARKING



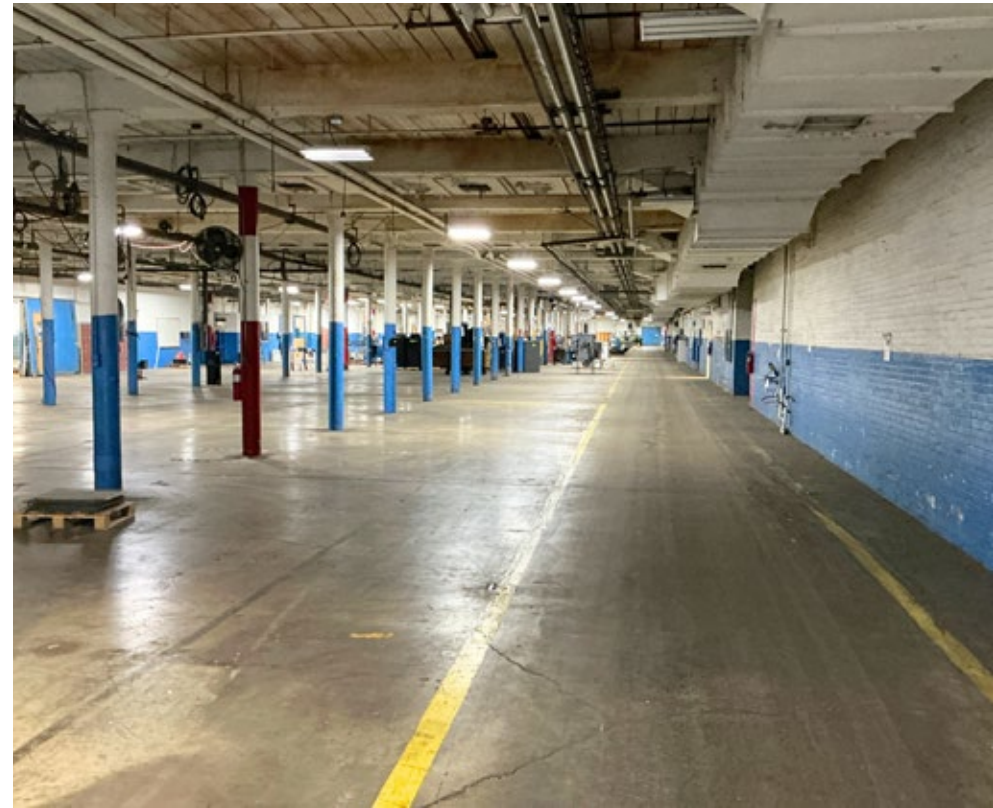
**FULLY FENCED
& SECURED WITH
GUARDSHACK**



PROPERTY DETAILS

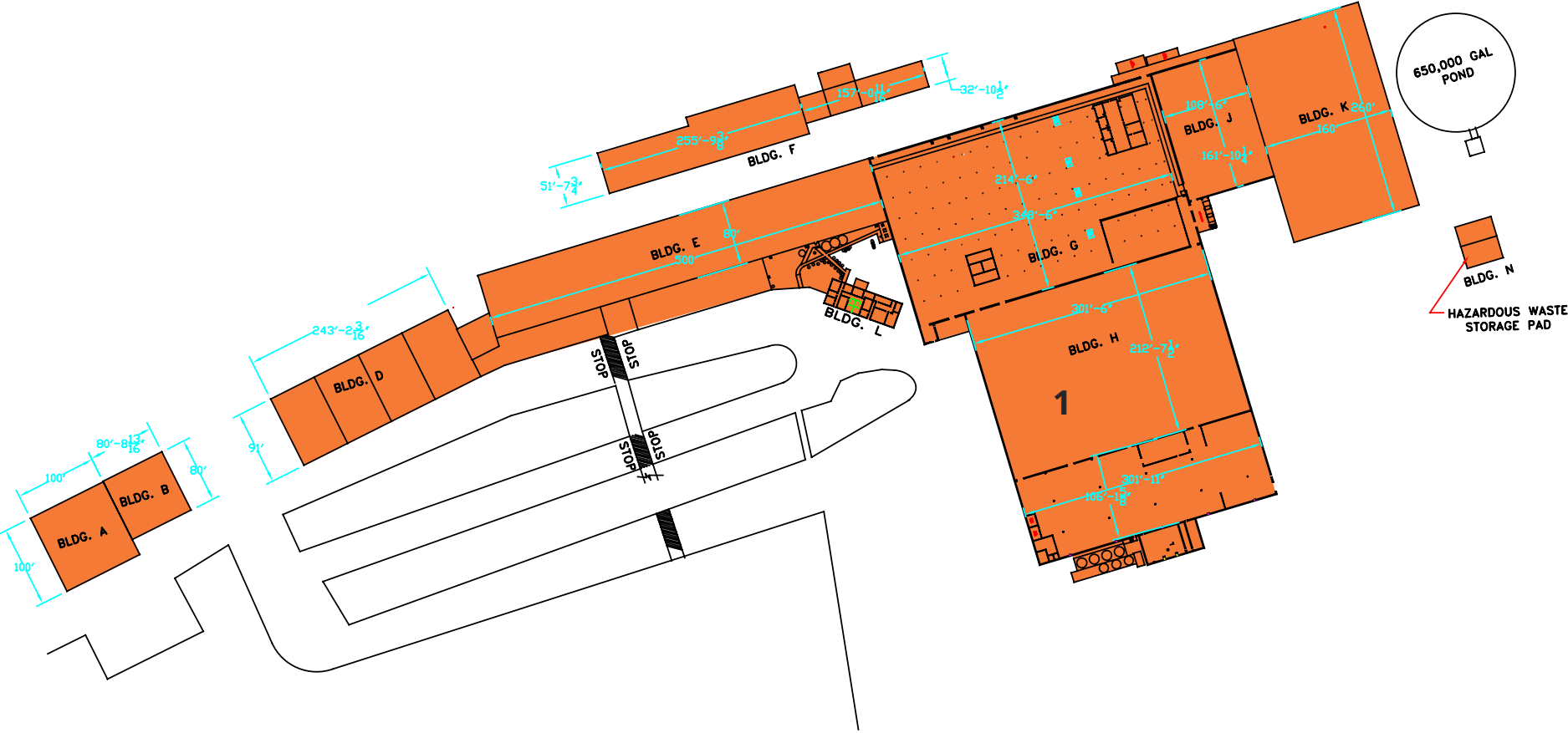
342 SHELBYVILLE MILLS RD | SHELBYVILLE, TN

AVAILABLE SPACE	384,000 SF
DOCK DOORS	7
GRADE-LEVEL DRIVE-IN DOORS	2
CLEAR HEIGHT	10' - 25'
ROOF	TPO Overlay
WALLS	Masonry & Metal
FLOORS	Reinforced Concrete
YEAR BUILT	1929
YEAR RENOVATED	2026
LIGHTING	LED
POWER	6, 480V Utility Feeds 2 Modernized 1600A GE Switchboards
PARKING	Ample
LAND AREA	107.67 Acres
ZONING	I2: Industrial Heavy
PARCEL ID	002088 04800



FLOOR PLAN

342 SHELBYVILLE MILLS RD | SHELBYVILLE, TN



NUMBER	SPACE DESIGNATION	CLEAR HEIGHT	SQUARE FEET
1	AVAILABLE	10' - 25'	384,000 SF
TOTAL			384,000 SF

LOCATION MAP

342 SHELBYVILLE MILLS RD | SHELBYVILLE, TN

US-41	3 MILES
I-24	21 MILES
HUNTSVILLE, AL	58 MILES
NASHVILLE, TN	61 MILES
CHATTANOOGA, TN	98 MILES

