



FOR LEASE | **325,467 SF**
4799 S EASON BLVD | **TUPELO, MS**

ROBERT KRIEWALDT 920-915-9746 | ROBERT@PHOENIX3PL.COM



PHOENIX
LOGISTICS

Strategic Real Estate. Applied Technology. Tailored Service.

This document has been prepared by Phoenix Investors for advertising and general information only. Phoenix Investors makes no guarantees, representations, or warranties of any kind, expressed or implied, regarding the information including, but not limited to, warranties of content, accuracy, and reliability.

PROPERTY DETAILS

4799 S EASON BLVD | TUPELO, MS

| | |
|----------------------------|---------------------------------------|
| AVAILABLE SPACE | 325,467 SF |
| WAREHOUSE SPACE | 303,599 SF |
| OFFICE SPACE | 20,825 SF |
| DOCK DOORS | 27 |
| GRADE-LEVEL DRIVE-IN DOORS | 1 |
| CLEAR HEIGHT | 18' |
| ROOF | Sealed Membrane |
| WALLS | Brick |
| FLOORS | Reinforced Concrete |
| YEAR BUILT | 1952 - 1995 |
| FIRE SUPPRESSION | Wet |
| LIGHTING | Fluorescent, Incandescent, & Some LED |
| PARKING | 524 Surface Spaces |
| LAND AREA | 41.71 Acres |
| ZONING | MUE-2: Mixed-Use Employment |
| PARCEL ID | 113J-07-058-00 |

PROPERTY HIGHLIGHTS



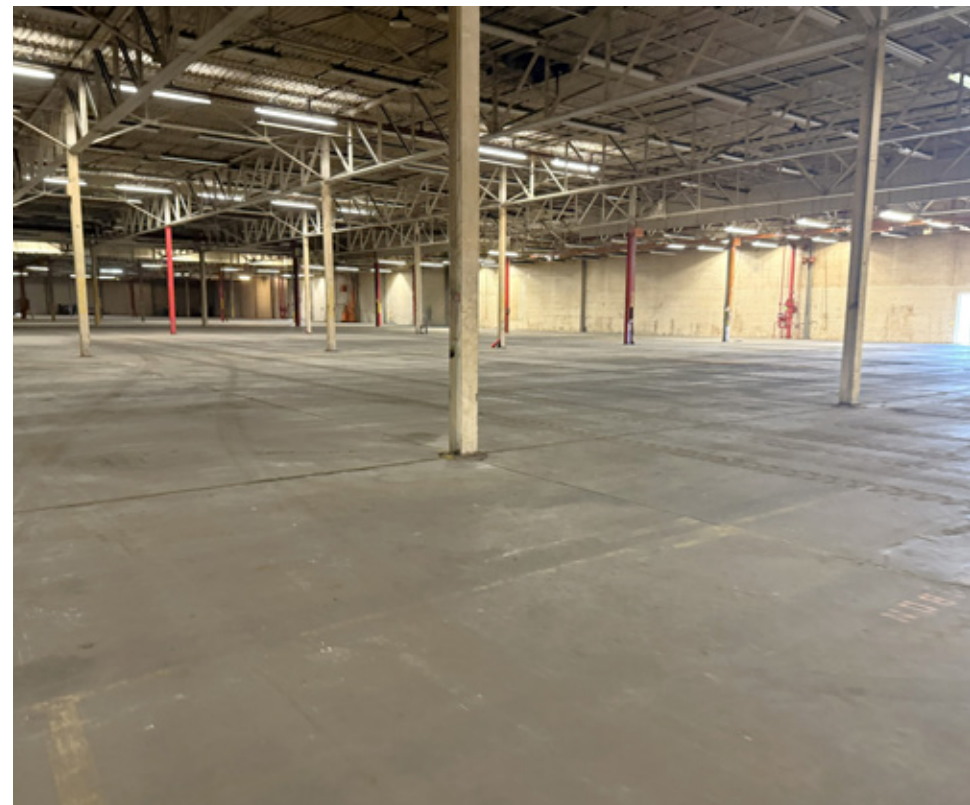
AMPLE TRAILER PARKING



SECURITY GATES & CHAIN LINK FENCING



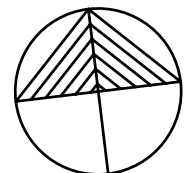
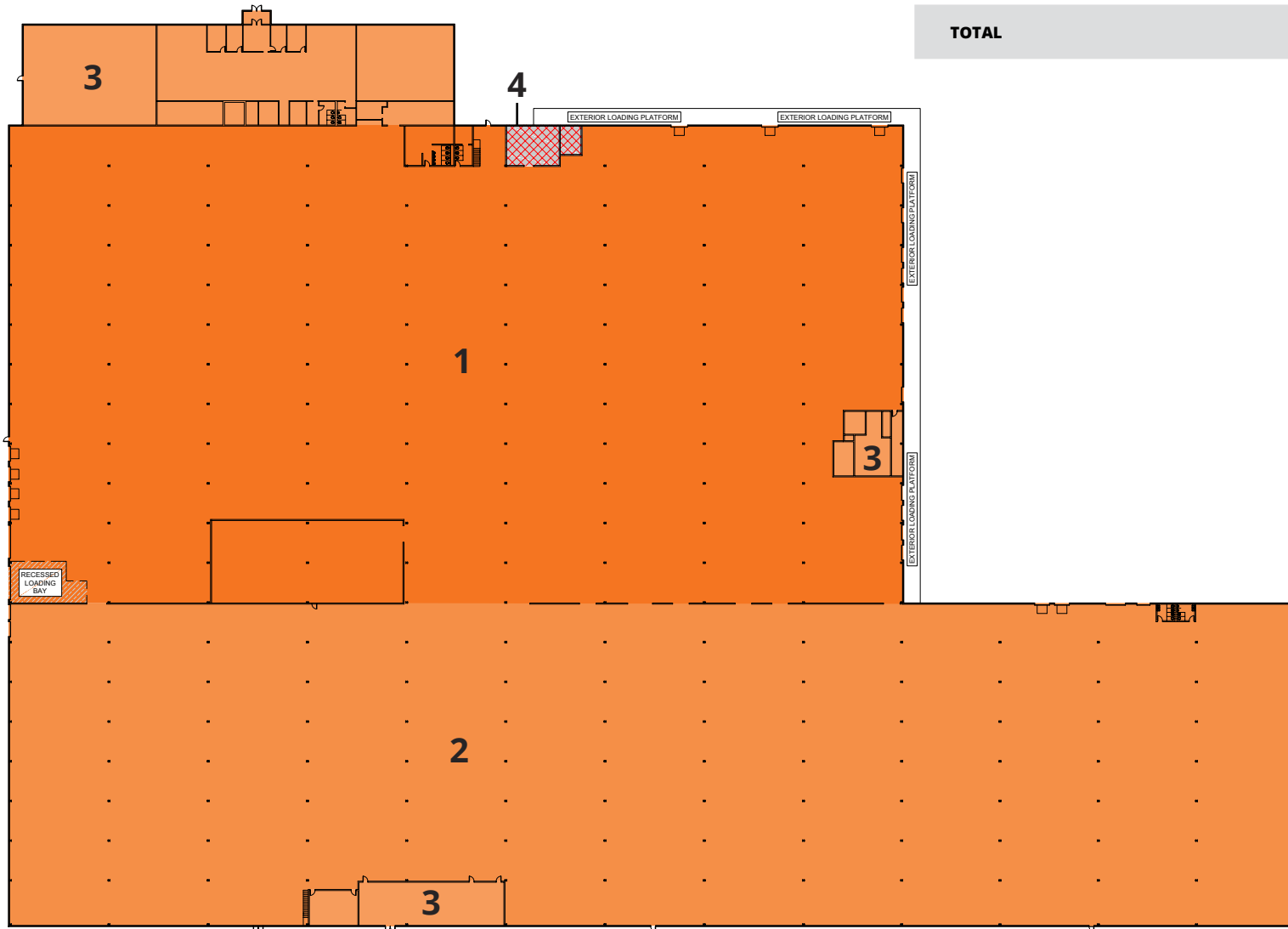
CONVENIENT ACCESS TO I-22



FLOOR PLAN

4799 S EASON BLVD | TUPELO, MS

| NUMBER | AVAILABILITY | COLUMN SPACING | CLEAR HEIGHT | SQUARE FEET |
|--------------|--------------|----------------|--------------|-------------------|
| 1 | WAREHOUSE | 24' x 60' | 18' | 153,985 SF |
| 2 | WAREHOUSE | 24' x 60' | 18' | 149,614 SF |
| 3 | OFFICE | N/A | 9' | 20,825 SF |
| 4 | MECHANICAL | N/A | N/A | 1,043 SF |
| TOTAL | | | | 325,467 SF |



SITE PLAN

4799 S EASON BLVD | TUPELO, MS



LOCATION MAP

4799 S EASON BLVD | TUPELO, MS

| | |
|----------------|-----------|
| I-22 | 5 MILES |
| MEMPHIS, TN | 118 MILES |
| BIRMINGHAM, AL | 139 MILES |
| HUNTSVILLE, AL | 144 MILES |
| NASHVILLE, TN | 203 MILES |

