



FOR LEASE | **9,295 SF**
625 - 701 S SIDE DR | **DECATUR, IL**

ROBERT KRIEWALDT 920-915-9746 | ROBERT@PHOENIX3PL.COM



PHOENIX
LOGISTICS

Strategic Real Estate. Applied Technology. Tailored Service.

This document has been prepared by Phoenix Investors for advertising and general information only. Phoenix Investors makes no guarantees, representations, or warranties of any kind, expressed or implied, regarding the information including, but not limited to, warranties of content, accuracy, and reliability.

PROPERTY DETAILS

625-701 SOUTH SIDE DR | DECATUR, IL

| | |
|-----------------|---------------------------|
| AVAILABLE SPACE | 9,295 SF |
| DRIVE-IN DOORS | 3 |
| CLEAR HEIGHT | 29' 4" |
| PARKING | Approx. 80 Surface Spaces |
| RESTROOMS | 2 |
| ZONING | Industrial |

PROPERTY HIGHLIGHTS



NEW EXTERIOR PAINT



LOCATED IN DECATUR MACON COUNTY ENTERPRISE ZONE



6 MILES FROM MIDWEST INLAND PORT INTERMODAL RAMP

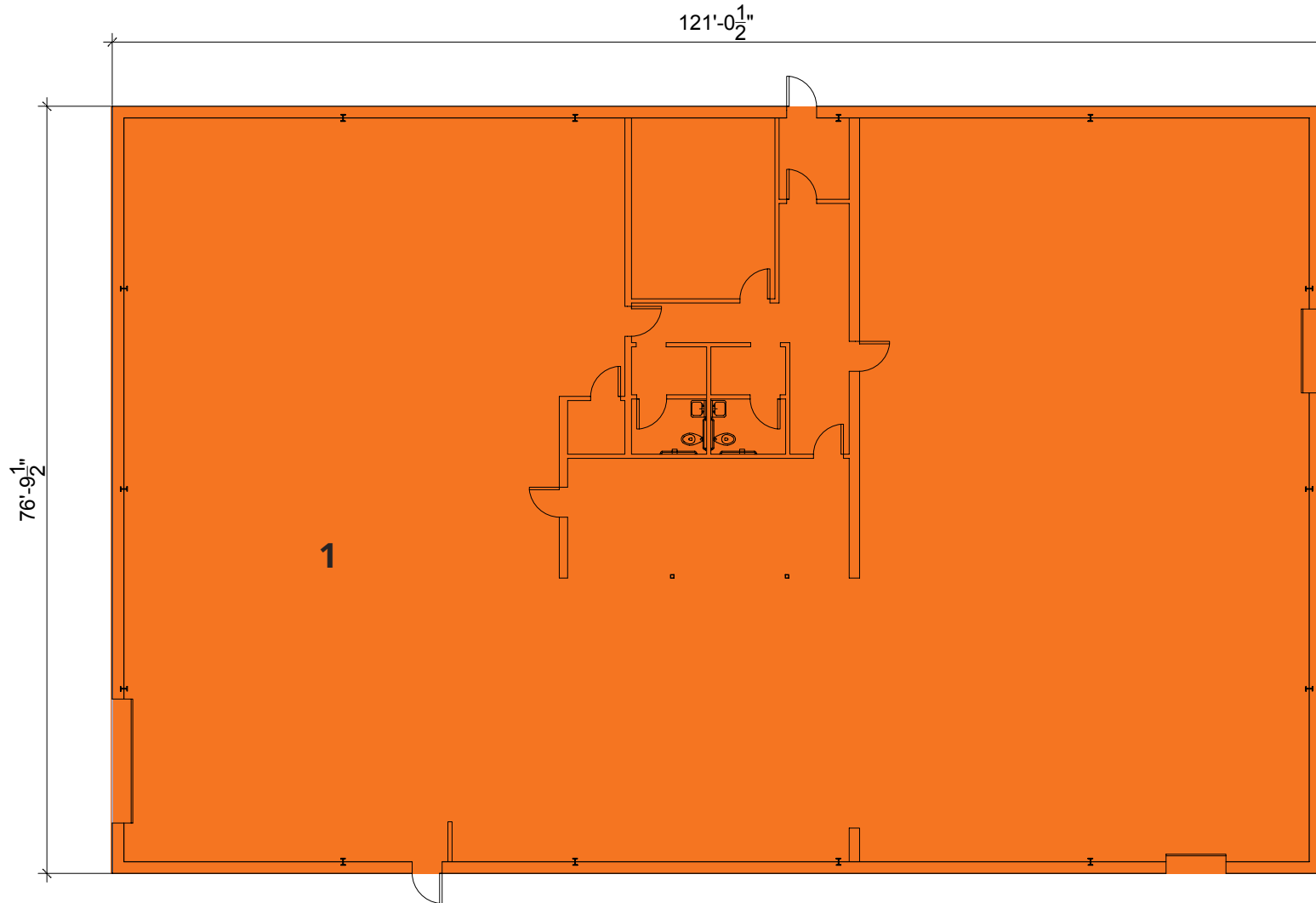


CONVENIENT ACCESS TO I-72 VIA HWY 51



FLOOR PLAN

625-701 SOUTH SIDE DR | DECATUR, IL



| NUMBER | SPACE DESIGNATION | CLEAR HEIGHT | OH DOORS | SQUARE FEET |
|--------------|-------------------|--------------|----------|-----------------|
| 1 | AVAILABLE | 29' 4" | 3 | 9,295 SF |
| TOTAL | | | | 9,295 SF |

