



FOR LEASE/SALE | **45,095 SF**
212 108TH STREET | **AMORY, MS**

ROBERT KRIEVALDT 920-915-9746 | ROBERT@PHOENIX3PL.COM



PHOENIX
LOGISTICS

Strategic Real Estate. Applied Technology. Tailored Service.

This document has been prepared by Phoenix Investors for advertising and general information only. Phoenix Investors makes no guarantees, representations, or warranties of any kind, expressed or implied, regarding the information including, but not limited to, warranties of content, accuracy, and reliability.

PROPERTY DETAILS

212 108TH STREET | AMORY, MS

| | |
|------------------|------------------|
| AVAILABLE SPACE | 45,095 SF |
| CLEAR HEIGHT | Up to 20' |
| ROOF | Galvanized Metal |
| YEAR BUILT | 1973 |
| YEAR RENOVATED | 2011 |
| POWER | 2500 kVA |
| LAND AREA | 3.3 Acres |
| DRIVE-INS | 2 |
| FIRE SUPPRESSION | Wet |
| ZONING | I-1: Industrial |

PROPERTY HIGHLIGHTS

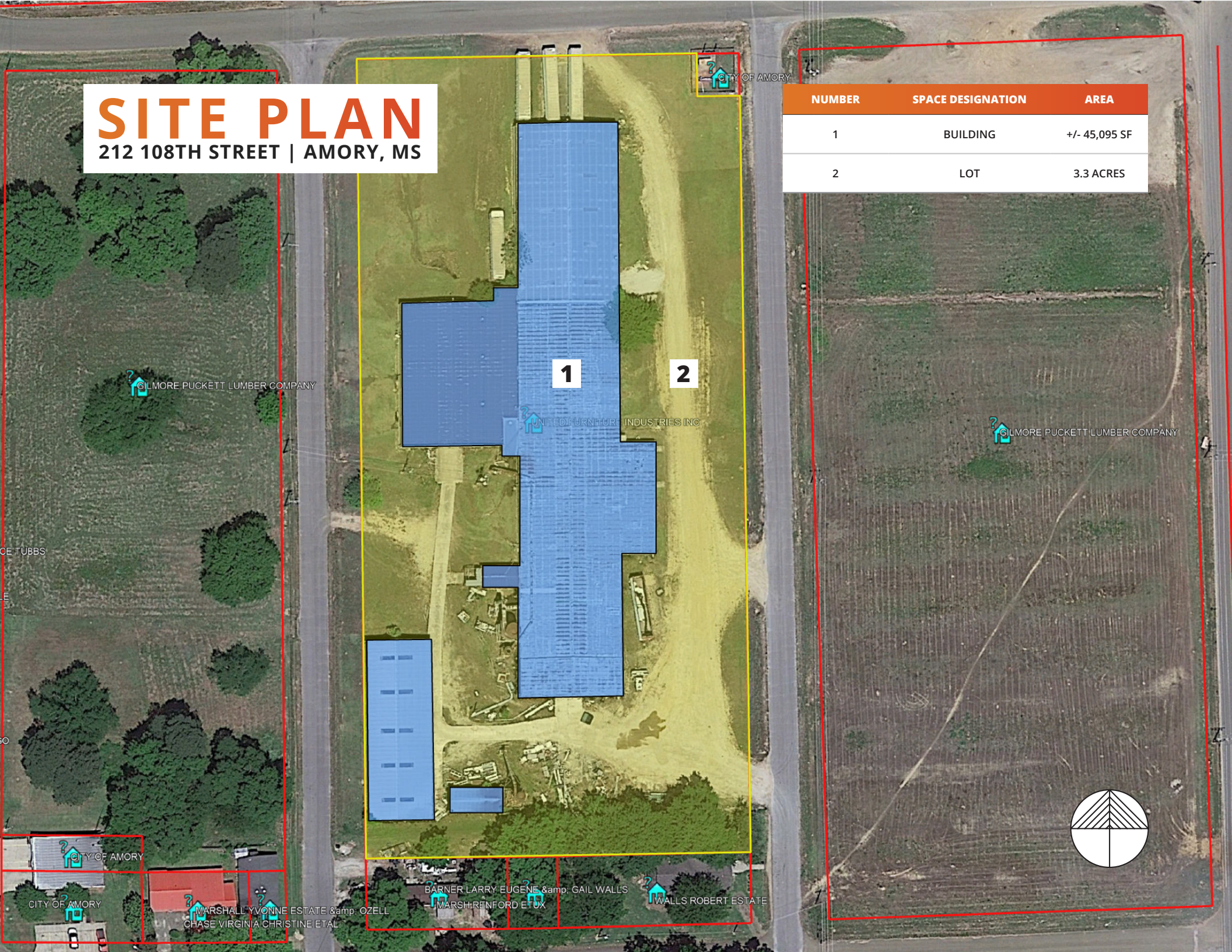


~3 UNITS (FORCED AIR/AC)

SITE PLAN

212 108TH STREET | AMORY, MS

| NUMBER | SPACE DESIGNATION | AREA |
|--------|-------------------|---------------|
| 1 | BUILDING | +/- 45,095 SF |
| 2 | LOT | 3.3 ACRES |



LOCATION MAP

212 108TH STREET | AMORY, MS

| | |
|----------------|-----------|
| I-22 | 23 MILES |
| BIRMINGHAM, AL | 119 MILES |
| HUNTSVILLE, AL | 138 MILES |
| MEMPHIS, TN | 142 MILES |
| NASHVILLE, TN | 229 MILES |

